

### Location

Solton Manor lies on the edge the hamlet of East Langdon. Nearby St Margaret's provides a range of local amenities with further leisure, educational and shopping facilities available in Deal, Dover and Canterbury.

The A2 provides access to the M2 and the A20 at Dover links to the M20. High speed trains from Martin Mill run to London St Pancras from around 75 mins. Links to the Continent are excellent with ferry services from the Port of Dover, together with Shuttle services via the Channel Tunnel near Folkestone and the Eurostar from Ashford International.

### Services

Solton Manor has mains electricity and water, private drainage and oil-fired heating.

### Local Authority

Dover District Council (01304 821199); Kent County Council (03000 414141)

### Directions

From the Duke of Yorks roundabout on the A2 at Dover turn left onto the A258 (Deal Road). Take the second left turn (signposted to East Langdon) and continue down this road. Take the first turning on the left (signposted Solton Manor) and follow the road up over the bridge to the house.

### Viewings

Strictly by appointment through the joint sole agents, Strutt & Parker or Marshall & Clarke

### Floorplans for Solton Manor

House internal area 6,638 sq ft (617 sq m)  
For identification purposes only.



# First Floor - Solton Manor



Room 1 (4-poster master suite) plus 2 blow ups

.....  
.....  
.....  
.....

Room 2 (a double or twin room) plus 1 blow up

.....  
.....  
.....

Room 3 (a double or twin room) plus 1 blow up

.....  
.....  
.....

Room 4 (a double or twin room) plus 1 blow up

.....  
.....  
.....

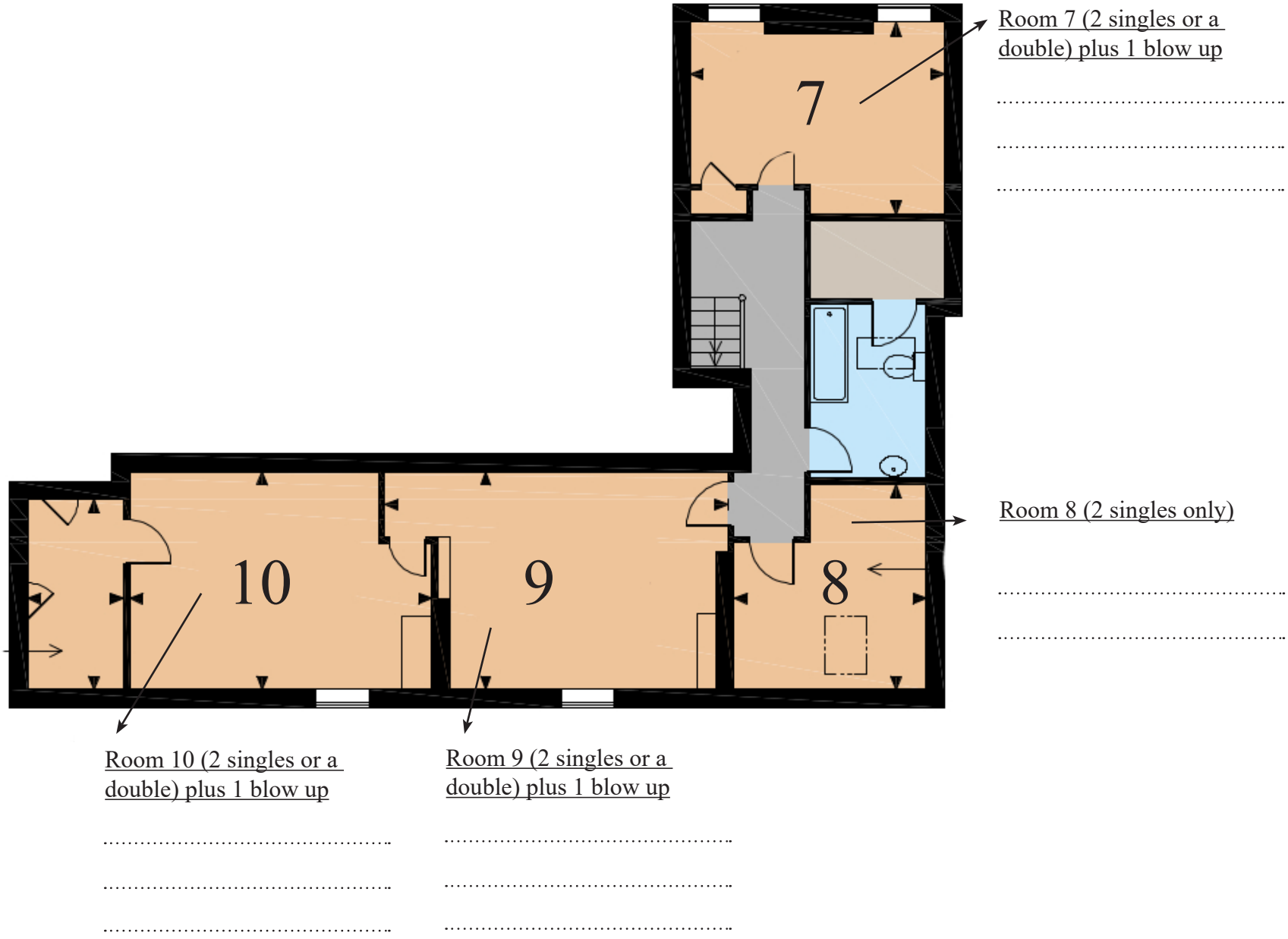
Room 6 (3 singles or 1 double and 1 single)

.....  
.....  
.....

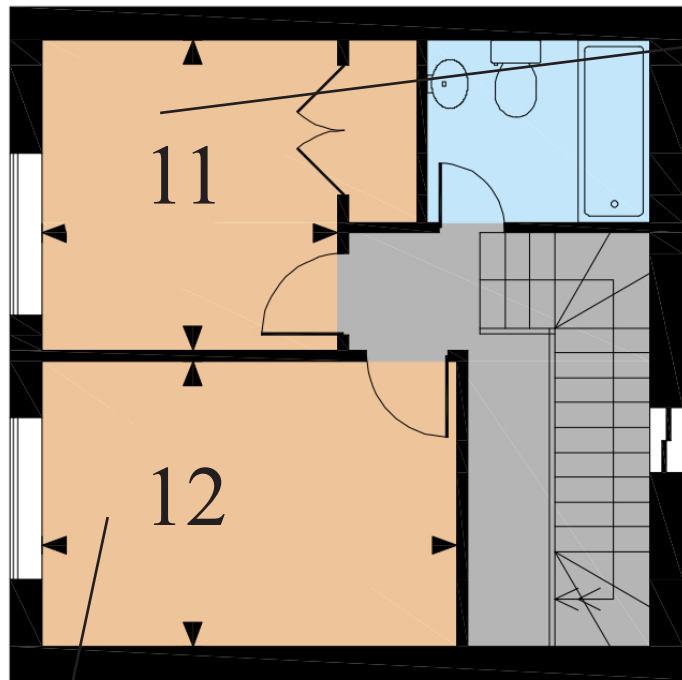
Room 5 (3 singles or 1 double and 1 single) plus 1 blow up

.....  
.....  
.....  
.....

# Second Floor - Solton Manor



# Dovecote (separate cottage) Solton Manor



Room 11 (1 double only)

.....  
.....

Room 12 (2 singles only)

.....  
.....

Downstairs in Dovecote  
(2 blow ups)

.....  
.....